

Dikgwedi, dipaka le tsa bosa

Sedimonthole
Ferikgong
Tlhakole

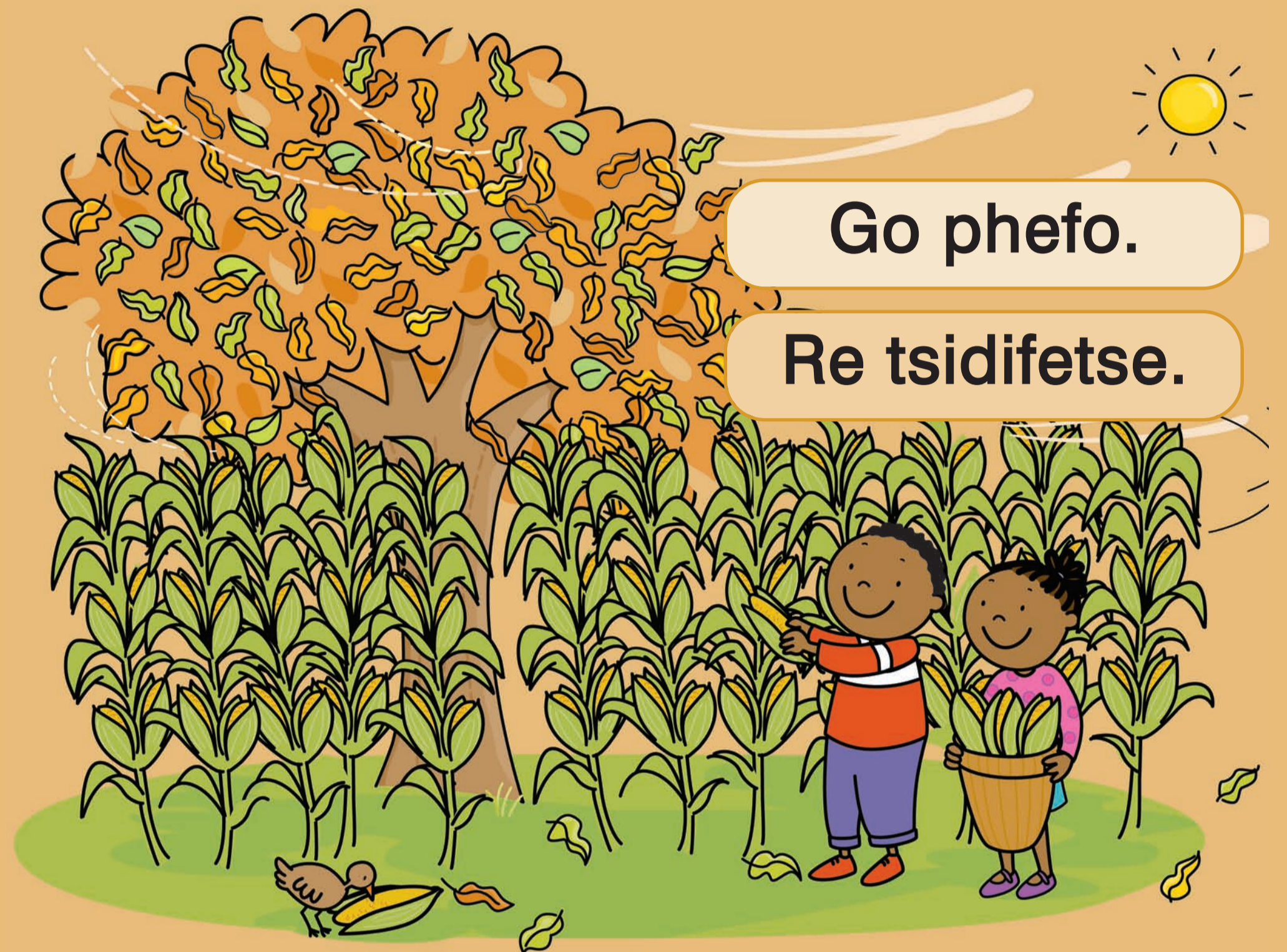


Go letsatsi.

Re a ša.

selemo

Mopitlwe
Moranang
Motsheganong



Go phefo.

Re tsidifetse.

lethafula

dikgakologo



Go maru.

Re bothitho.

Lwetse
Diphalane
Ngwanatsele

mariga



E ana.

Re a gatsela.

Seetebosigo
Phukwi
Phatwe