

# SETSWANA

Dibuka tsa go ithuta go buisa tsa **Vula Bula** ga di tshwane le dipe ka gone nngwe le nngwe ya tsone e kwadilwe ka puo e e maleba ya Aforika Borwa e babadi ba yone ba tlhologileng ka yone, e bile e dirilwe ka kelotlhoko tumalanong le kgatelopele ya tlhago le dipatlafalo tse di kgethegileng tsa puisokwalo tsa puo eo.



## Buka ya kgoboko ya dikgang • Mophato 3 • Dikotara 3 – 4

- |  |                                  |
|--|----------------------------------|
| Kgang-49 Ao, Rre Kgabo!                    | Kgang-57 Mmutla le Khudu         |
| Kgang-50 Co reetsa mmimo                   | Kgang-58 Toropo yarona           |
| Kgang-51 Re baka dikuku le nkoko           | Kgang-59 Tshoswane le tsiekgope  |
| Kgang-52 Bosigo mo polasing                | Kgang-60 Ke leino la ga mang le? |
| Kgang-53 Ke mang yo o thubileng fensetere? | Kgang-61 Dikeletso tse tharo     |
| Kgang-54 Lesedi o ya lebenkeleng           | Kgang-62 Batsoma diphologolo     |
| Kgang-55 Sopo ya maje                      | Kgang-63 Tau le peba             |
| Kgang-56 Go nna eng fano?                  | Kgang-64 Aforika Borwa wa rona   |

Dikgang tseno tsa go ithuta go buisa di bula ditshono di le dintsi tsa go buisa ka ditlhopho, ka go kaelwa, ka bobedi le bobedi le go ithuta go buisa o le esi ditumatlhaka le mafoko a a tlhagang thata/a o a lebang o bo o leka go a bitsa. Dipolelo tse di agilweng ka tsela e e motlhofo le tlotlofoko e e tlwaelegileng e dira gore ba dire kgatelopele ka bonako fa ba buisa. Ditshwantsho tse dintle, tse di lebegang sentle e bile di na le dilo di le mmalwanyana mo go tsone di dira gore ba tlhaloganye ka bonako.

# SETSWANA

## Buka ya kgoboko ya dikgang



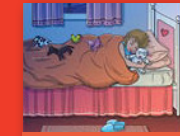
Ao, Rre Kgabo!



Co reetsa mmimo



Re baka dikuku le nkoko



Bosigo mo polasing



Ke mang yo o thubileng fensetere?



Lesedi o ya lebenkeleng



Sopo ya maje



Go nna eng fano?



Mmutla le Khudu



Toropo yarona



Tshoswane le tsiekgope



Ke leino la ga mang le?



Dikeletso tse tharo



Batsoma diphologolo



Tau le peba



Aforika Borwa wa rona

Setswana

Mophato-

3

Dikotara 3 – 4

Leina la morutwana:

Mophato:



## PLEASE NOTE

**The Setswana Grade 1, 2 and 3 anthology files are too large to display on our website.**

**Please contact Molteno Institute for more information, or to order your copies.**

**Tel: 011 484 6245**

**E-mail: [info@molteno.co.za](mailto:info@molteno.co.za)**